


Outsourcing of Suppliers and Supplies Chains at Manipal University Jaipur

Over recent years, one of the biggest worldwide concerns has been ensuring sustainable consumption and production patterns. With the adoption of SDG 12, "Ensure sustainable consumption and production," and growing interest in the circular economy model, there is a chance to establish system-wide goals for all societies, acknowledging that our economic, financial, and governance decision-making are key drivers and solutions. Manipal University Jaipur has a vision to reduce material footprint to follow the vision MUJ has policies on Minimisation of disposable items and minimisation of plastic use. MUJ has issued an advisory to Qness Corps and Chef on Wheels and all the other outsourced services providers to abide MUJ's Minimisation policies.

Policy extended to building contractor and supplier:



G 6				Ground Floor		
Wall Concrete upto grad slab	Grade Slab PCC	Grade Slab RCC		No. of Rooms concreting		
Total Qty in cum	347.8	Total Qty in cum	126	Total Qty in cum	189	31
Completed Qty in cum	348	Completed Qty in cum	126	Completed Qty in cum	189	18
Completion %	100%	Completion %	100%	Completion %	100%	58%
G 5				Ground Floor		
Wall Concrete upto grad slab	Grad Slab PCC	Grad Slab RCC		No. of Rooms		
Total Qty in cum	347.8	Total Qty in cum	126	Total Qty in cum	189	31
Completed Qty in cum	32.5	Completed Qty in cum	0	Completed Qty in cum	32	0
Completion %	9%	Completion %	0%	Completion %	17%	
G 7				Ground Floor		
Wall Concrete upto grad slab	Grad Slab PCC	Grad Slab RCC		No. of Rooms		
Total Qty in cum	130	Total Qty in cum	80	Total Qty in cum	120	15
Completed Qty in cum	130	Completed Qty in cum	75	Completed Qty in cum	94.4	0
Completion %	100%	Completion %	94%	Completion %	79%	



Builder and contractors are hired on a contract stating and agreeing upon using sustainable practices, there work is adhering the minimisation policies.



Boys Hostel Blocks						
B 8						
SL NO	Excavation	PCC	Raft and RC wall up to gradeslab			
1	Total Qty in cum	3211	Total Qty in cum	113	Total Qty in cum	1054.775
2	Completed Qty in cum	3211	Completed Qty in cum	113	Completed Qty in cum	948.8
	Completion %	100%	Completion %	100%	Completion %	90%
B 10						
SL NO	Excavation	PCC	Raft and RC wall up to gradeslab			
1	Total Qty in cum	3672	Total Qty in cum	128	Total Qty in cum	1052
2	Completed Qty in cum	3672	Completed Qty in cum	128	Completed Qty in cum	745.8
	Completion %	100%	Completion %	100%	Completion %	71%
B 9						
SL NO	Excavation	PCC	Raft and RC wall up to gradeslab			
1	Total Qty in cum	2940	Total Qty in cum	108	Total Qty in cum	832
2	Completed Qty in cum	2220	Completed Qty in cum	80	Completed Qty in cum	363.5
	Completion %	76%	Completion %	74%	Completion %	44%

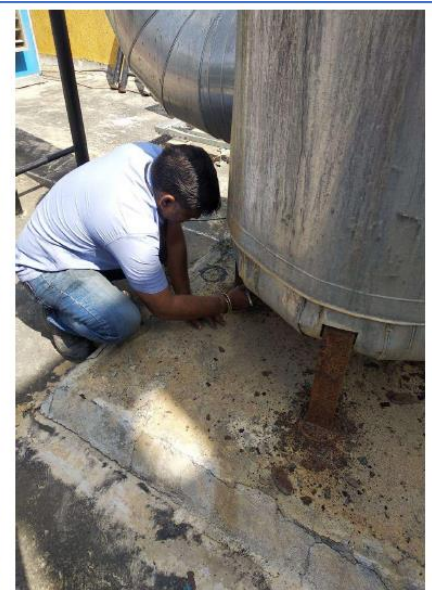
Construction contractors follows minimisation policies, controlling over waste and using minimum resources.



AC Unit installation in Purchase Office



Chiller Cleaning – Right Wing



Expansion Tank Cleaning – 2 AB



Repair is the best way to attain sustainability, thus MUJ promotes repair.





Outsourced canteens and vendors need to follow minimisation policies and use sustainability



Vendors are not allowed to use plastic disposables and adhere to minimisation policies