



**MANIPAL UNIVERSITY
JAIPUR**

FACULTY OF Design

SCHOOL OF ARCHITECTURE AND DESIGN

**“Landscape Planning Consultancy for Jai Vilas at the City Palace
Museum, Jaipur”**

Completion Date of Event (25/03/2022)



Contents of the Report

1. Introduction of the Event
2. Objective of the Event
3. Beneficiaries of the Event
4. Brief Description of the event
5. Drawing & Document
6. Photographs
7. Link of MUJ website

1. Introduction of the Event

On behalf of the School of Architecture and Design, Prof. (Dr.) Madhura Yadav has been invited to work as a Landscape Planning Consultant for Dronah - Development and Research Organization, under the Landscape Planning Consultancy for Jai Vilas at the City Palace Museum, Jaipur.

In this regard Prof. (Dr.) Madhura Yadav as the Principal Investigator (PI), Ar. Kinzalk S. Chauhan and Ar. Nisha Nelson as the Co-Principal Investigator (CO-PI) for the project. Professional fees for the same will be Rs. 2,00,000/- (Rupees Two Lakh).

2. Objective of the Event

- To rejuvenate the water system of Jai niwas palace, Jaipur
- To document and develop the Historic Garden of the palace.

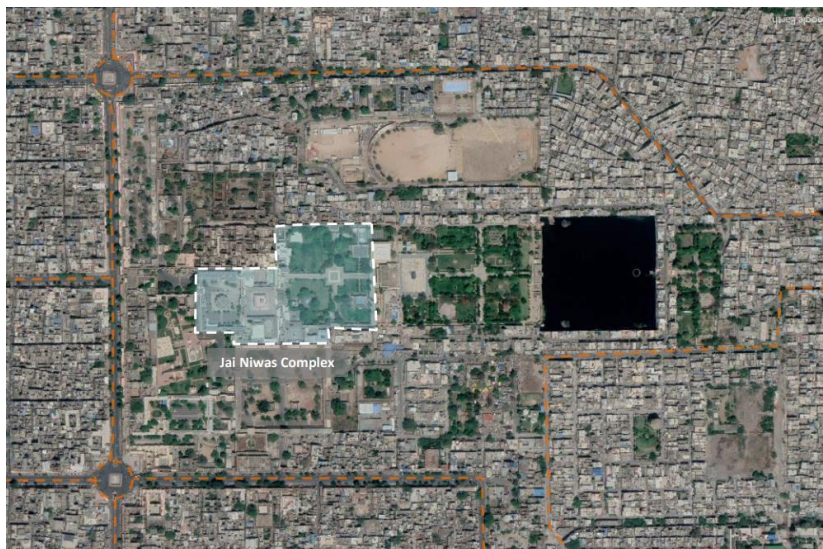
3. Beneficiaries of the Event

The involved faculties and students of the School of Architecture & Design got the chance to explore and work on the project.

4. Brief Description of the event

Jai Niwas Garden in Jaipur was established by Sawai Jai Singh II in 1868. Jai Niwas Garden has numerous, breathtaking plants and some striking structures. In the Pink city Jaipur, Jai Niwas Garden is situated at Jaleb Chowk at the rear of the Govind Devji temple, one of the primary magnetism in the garden. The design of Jai Niwas Garden has a unique touch of archetypal “Mughal Charbagh”.

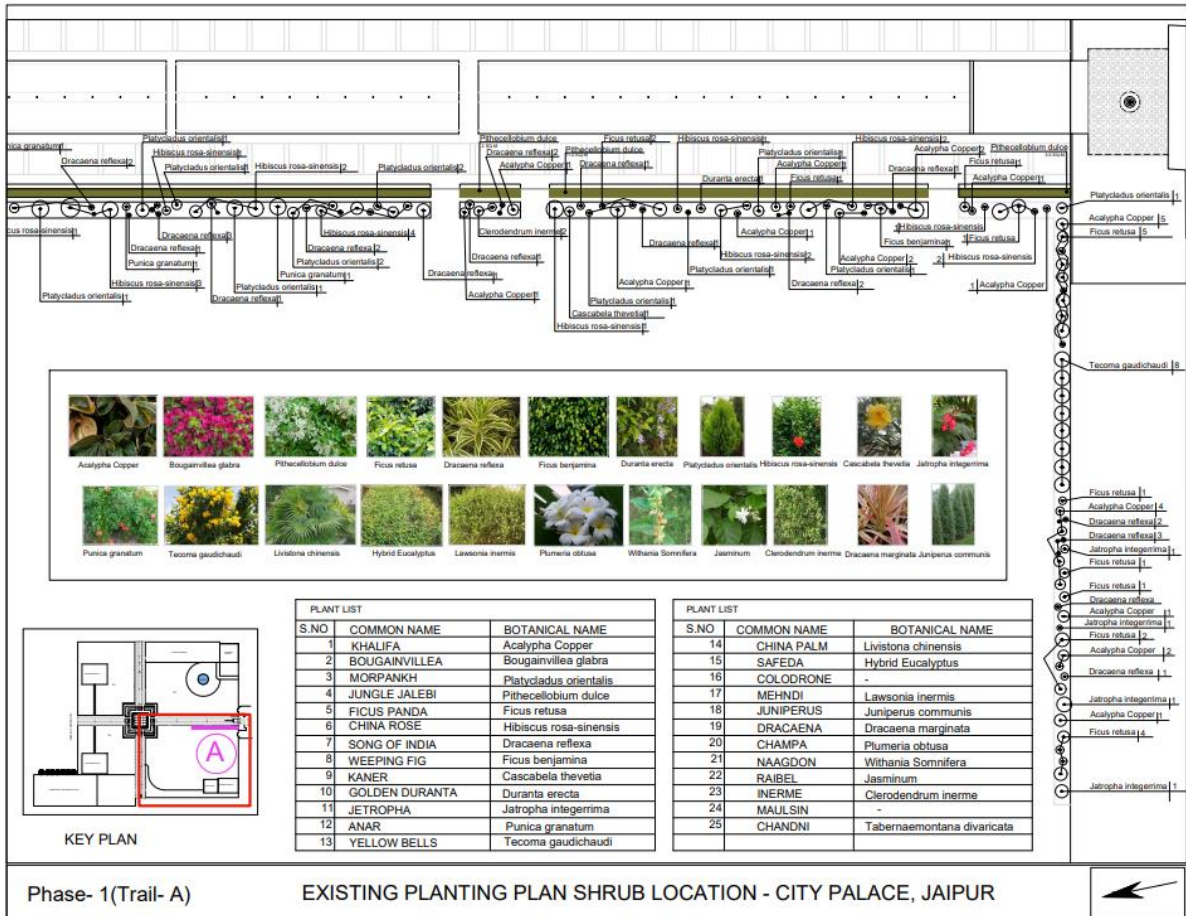
The Jai Niwas Garden had a unique water system with a network of wells and step wells and the surface water bodies of Talkatora. This system was used to serve as a source of groundwater recharge and allowed the water in the hills to percolate into the wells.



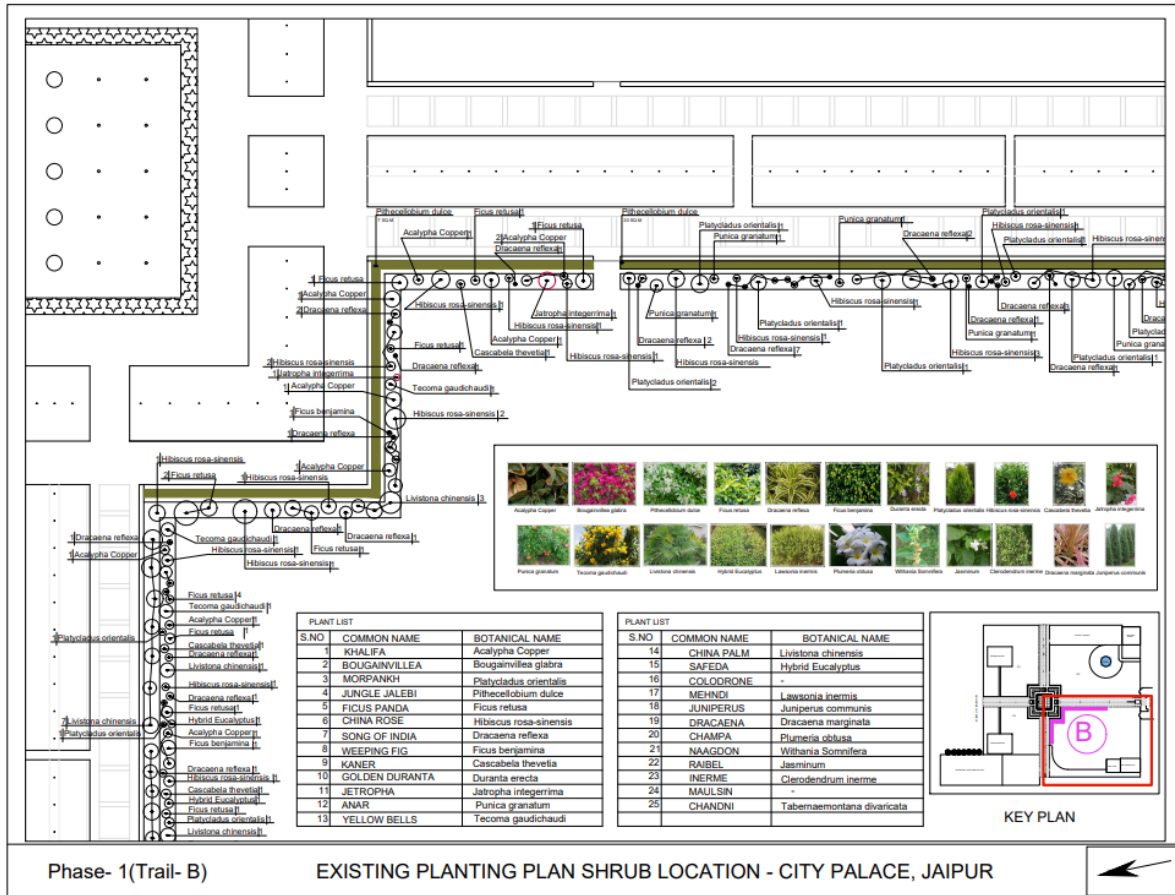
Due to the continuous modification in the planting system, a very random plantation is done.

In this frame of time, in Jai Niwas Garden there is no planting palate we can find *Acalypha Copper*, *Bougainvillea glabra*, *Platycladus orientalis*, *Pithecellobium dulce*, *Ficus retusa*, *Hibiscus rosa-sinensis* etc. Shrubs and *Delonix regia*, *Azadirachta indica*, *Pongamia pinnata*, *Bauhinia variegata*, *Saraca asoca* etc.

5. Drawings & Documentation

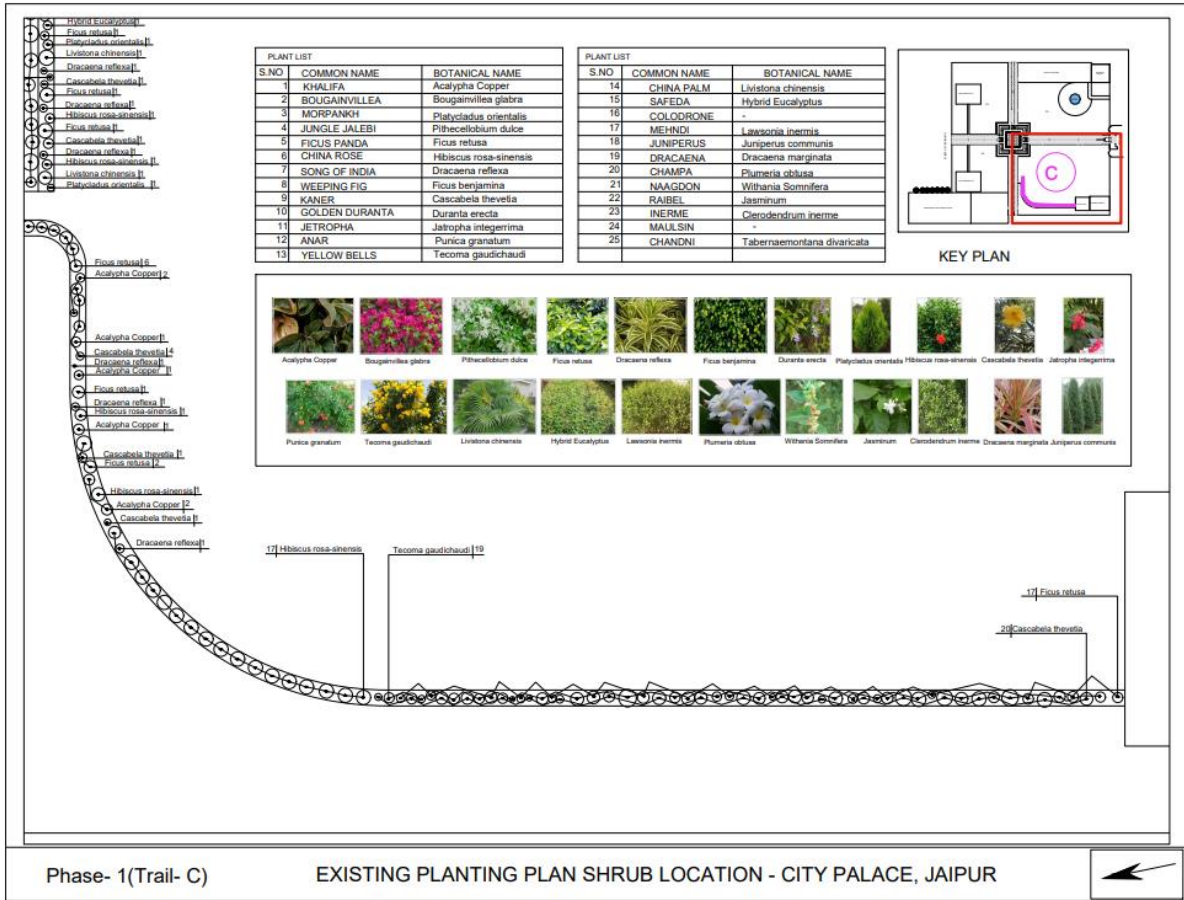


Documentation of Existing Shrubs in Jai Niwas Garden (Phase 1 – Train A)

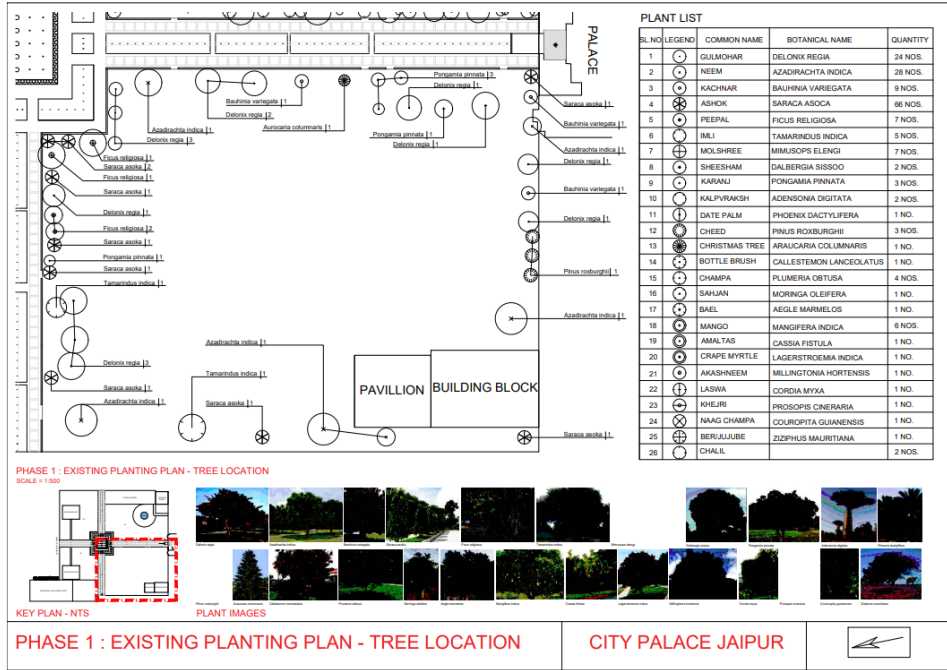


Documentation of Existing Shrubs in Jai Niwas Garden (Phase 1- Trail B)

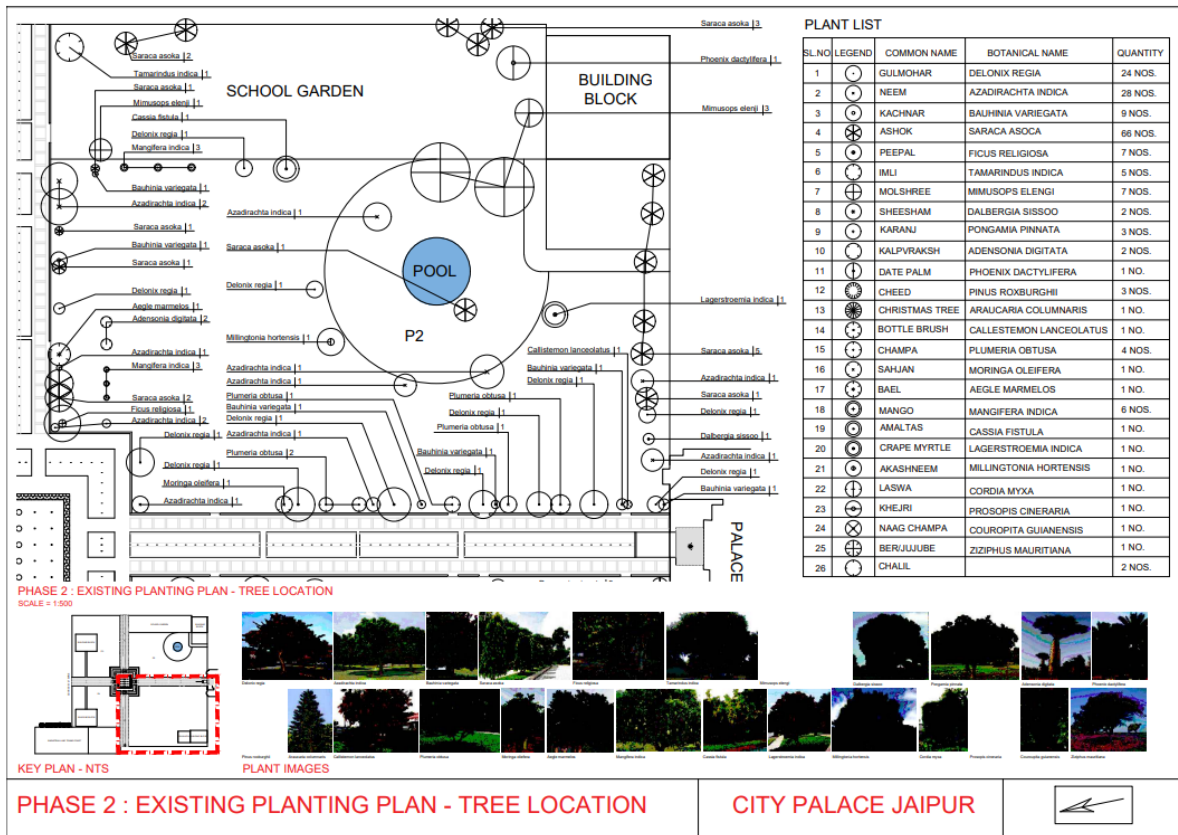




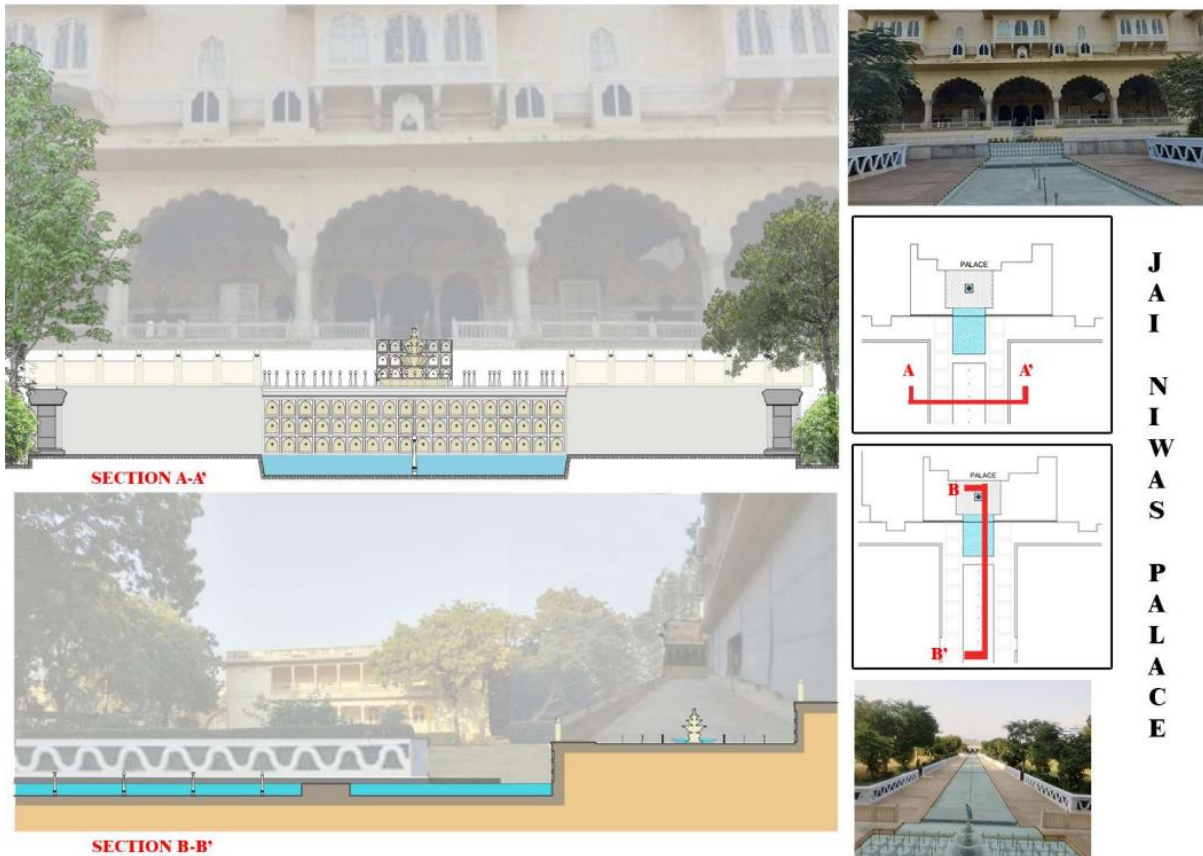
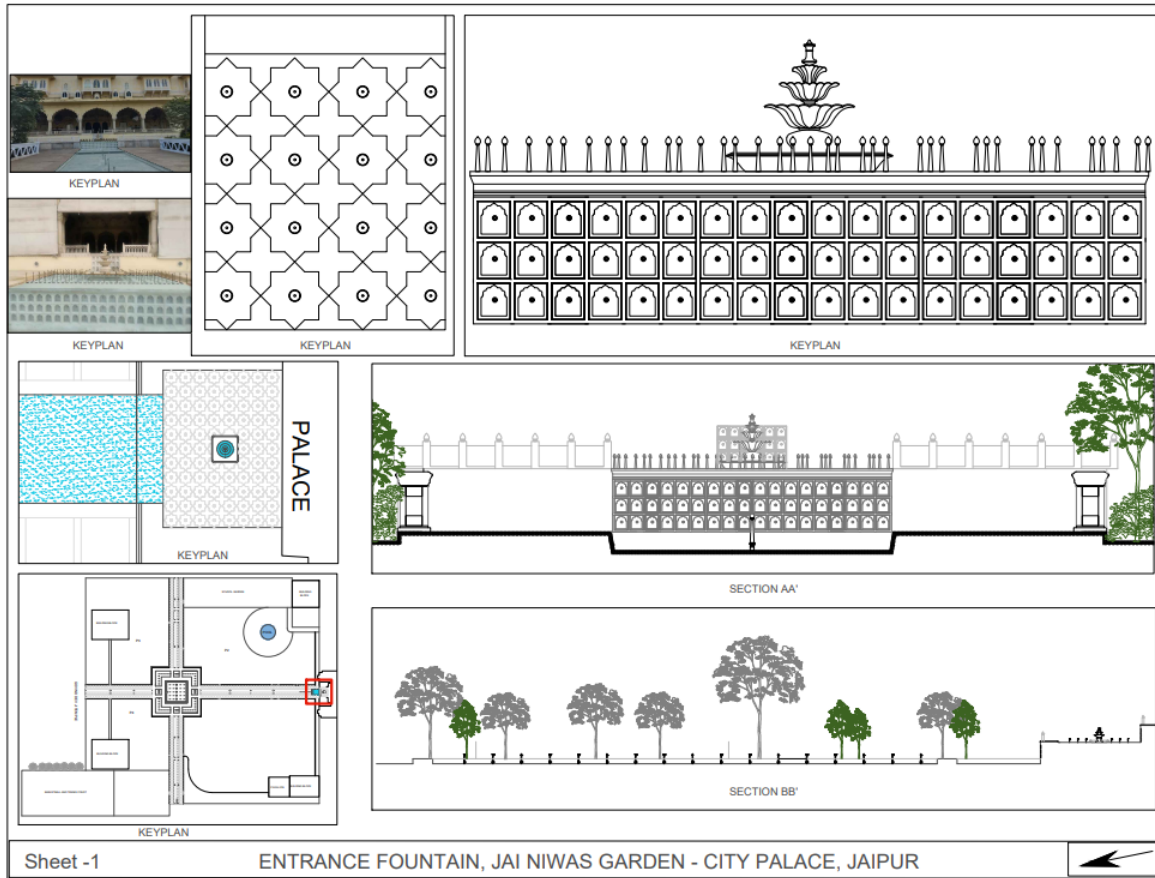
Documentation of Existing Shrubs in Jai Niwas Garden (Phase 1- Trail C)



Documentation of Existing Tree in Jai Niwas Garden (Phase 1)



Documentation of Existing Tree in Jai Niwas Garden (Phase 2)



6. Photographs of the event with captions



The central-axis pathway has sandstone pavement with the railing at the edge opening at the adjacent gardens.



The central water channel has the sandstone pavement with the Tulip nozzle rail in the center. The cross junction of the has central fountain consist of the band having the lotus leaves on the edge of the band and the Lotus flower fountain in the center.



Fountain



The cross junction of the has central fountain consist of the band having the lotus leaves on the edge of the band and the Lotus flower fountain in the centre.

7. Attendance of the Event

Prof (Dr.) Madhura Yadav - Principal Investigator, Ar. Kinzalk S. Chauhan - Co-Principal Investigator, Ar. Nisha Nelson - Co-Principal Investigator

8. Link of MUJ website stating the event is uploaded on website



Faculty Coordinator

Ar. Kinzalk S Chauhan